

OUR VOLUNTEERS

BOARD OF DIRECTORS

PRESIDENT:

Mark Robinson - AEP/SWEPCO

VICE-PRESIDENT:

Nikki Davis - Eastman Chemical Co.

TREASURER:

Jorge Acuna - Texas Bank and Trust

PAST PRESIDENT:

MaryAnn Hagenbucher - City of Longview

CAMPAIGN CHAIRS:

Shalonda Adams - Pine Tree ISD
Dwayne Archer - City of Longview

Members

Jamey Brogan - CHRISTUS Good Shepherd Medical Center
Stephani Castanon - Longview Regional Medical Center
Andrew Coggins - Eastman Chemical Co.
Donald Daniels, Sr. - Community Member
AJ Harris - Gregg County Health Dept.
Christina Hollwarth - Hollwarth Law
Dietrich Johnson - City of Longview
Chad Jones - Wellness Pointe
Paula Loden - Spring Hill State Bank
Pat O'Bryan - R. Lacy
Michael Purifoy - VeraBank
Erika Rader - Everlasting Legacy Memorials
Mel Reynolds - Cadence Bank
Eric Rodriguez - Henry & Peters, PC
Dana Rutland - StemCo

COMMUNITY INVESTMENT COMMITTEE

Shawn Hara
Jen Eldridge
Scott Lewis
MaryAnn Hagenbucher
Mark Robinson

SPECIAL EVENTS COMMITTEE

Jorge Acuna
Mark Robinson
Paula Loden
Regina Mixon
Brittany Melancon
Erika Rader
Katherine Smith



GREATER LONGVIEW UNITED WAY

23-24 ANNUAL REPORT



A LETTER FROM OUR EXECUTIVE DIRECTOR

Our "Connecting the Dots" campaign illuminated a profound truth: hope flourishes when we unite. Our community, much like so many across the nation, faces challenges and struggles daily. Too often people do not know where to turn, how to access resources, or even know the next step. Through our amazing partner agencies and initiatives, we are providing a way forward for so many. Because of your generosity, countless people have been helped to meet some of the basic needs of life: food, shelter, education and so much more. Because of you, lives have been changed forever.

Your commitment has been the catalyst for transformation. We've seen firsthand how a single connection can spark a chain reaction of hope. Together, we've not just connected dots – we've drawn a picture of what's possible when we unite in purpose.

Thank you for investing in the future of our community. May we live into the vision of Greater Longview United Way: to unite the caring power of our community

With gratitude and hope,



Dr. Dolive

REV. DR. EVAN M. DOLIVE
EXECUTIVE DIRECTOR

OUR FOCUS AREAS



EDUCATION

13 Education Programs Funded
2223 Children enrolled in Dolly Parton's Imagination Library
3 Born Learning Trails installed at local parks
19 Book Vending Machines placed in local schools and agencies



42K
BOOKS GIVEN OUT

FINANCIAL STABILITY

10 Financial Stability Programs Funded
During times of crisis, The **InfoLine of Gregg County** serves as a free, confidential line to connect residents to help.

- Top 3 Needs:
1. Rental Assistance
 2. Utility Assistance
 3. Food



HEALTH

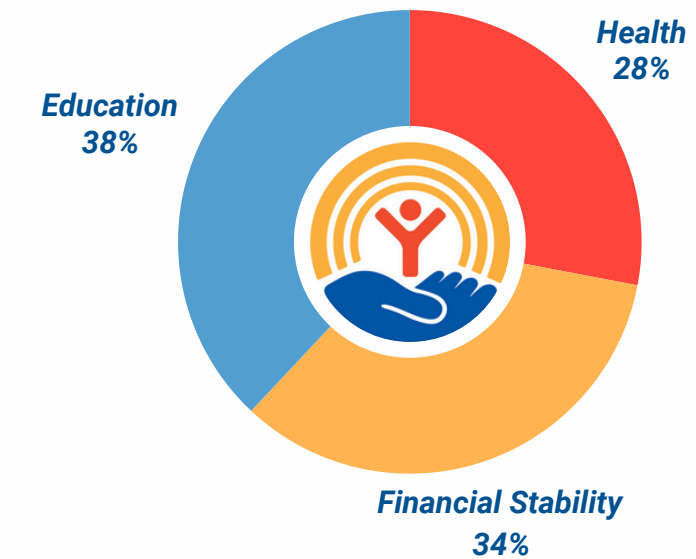
9 Health Programs Funded
3,140 used SingleCare for prescription assistance
Top 2 medication therapy class:
1. Mental Health
2. Heart Disease



\$386K
IN
PRESCRIPTION SAVINGS

OUR COMMUNITY INVESTMENT

23-24 IMPACT



\$1.1
MILLION
RAISED

32
PROGRAMS
FUNDED

19
PARTNER
AGENCIES

PARTNER AGENCIES

American Red Cross Serving East Texas
Boys & Girls Club of the Big Pines
Community Healthcore
East Texas Area Council, Boy Scouts
East Texas CASA
East Texas Literacy Council
ETCADA
Family Promise of Longview
Friends of Partners In Prevention
Girl Scouts of North East Texas

Longview Community Ministries
The Martin House Children's Advocacy Center
NorthEast Texas Habitat for Humanity
Parenting Resource Center of East Texas
Pathstones Counseling Center
The Salvation Army
Seesaw Children's Place
Twelve Way Foundation
Women's Center of East Texas

HEART STORY

"Chrissy and her 3-year-old son live in a home with sinking floors and a leaking roof. After surviving cardiac arrest and being denied disability, she struggled to make ends meet. Thanks to Longview Community Ministries, Chrissy received a monthly food box, help with her electric bill, and was referred to Habitat for Humanity."

